

# P.U.M.A. soft® – Permanent soft relining material for dentures

## Reliable even in complex clinical cases

Dr. Markus Th. Firla

**Permanent resilient linings of lower jaw bone basis surfaces - simply known as soft relining materials - are a standard procedure of every dental clinic. Thus the decision if the treatment is done directly („chairside“) or indirectly by additional steps in a laboratory, is as important as the selection of the suitable soft relining material.**

**S**ome basic rules should be obeyed. First: An irregular prosthetic base results in a resilient relining. Second: The thinner the tegument cover on the bone, the thicker the soft

relining material layer. Third: If the remaining teeth or implants guarantee a safe hold and precise position of the removable denture, then it is favourable to choose a much less



*Image 1: Situation after exposure of two implants in regio 33 and 43 and luting of corresponding protective caps, before the insertion of the secondary parts with a special supra construction*



*Image 2: Situation of the maxilla (anterior). The already finished prosthetic treatment of the maxilla (removable telescope crown prosthesis) provides clear occlusal results*

resilient material for the soft relining denture.

## Indications for soft relinings

1. Lining of dentures during the healing process of ostensible irregular jaw bone ridge-morphology
2. Chronically induced pressure irritations due to irregular jaw bone ridge – or mucosa relations
3. Prevention of mechanical induced irritations of exposed nerves in the area of the denture base
4. Support of wearing of dentures in cases of psychological reduced patient acceptance of wearing dentures
5. Increase of fixation of dentures by increasing the low-pressure effect, caused by the resilience of the soft relining material
6. Protection of alveolar bones and tegument areas at pre-prosthetic surgical and implantological interventions

The decision whether a soft relining is done directly in the patient's mouth or is conducted indirectly by involving a laboratory, is in case of the new generation of relining materials on A-silicone basis, not any longer influenced by materials-processing problems, but can be made accordingly to the specific indication.



*Image 3: Basic view on the mandibular complete denture with exposure of the implants. The denture base for the relining is already worked out precisely. Notice: For the holding of the denture base and the vertical relations the denture base section 35-37 and 45-47 were not touched*



*Image 4: Basic view on the finished relining with P.U.M.A. soft according to the manufacturer's instructions for use (R-dental, Germany). The precise impression and the excellent adhesion between relining material and prosthesis material is of considerable importance*



Image 5: View on the denture ready for insertion. The low colour difference of P.U.M.A soft to the remaining body of the the prosthesis is positively noticeable. The work out of the crossings from the soft relining material to the hard denture is without any concern by using suitable instruments.



Image 6: Partial view of the relined denture base with P.U.M.A. soft. It is clearly visible that after setting this permanent soft A-silicone enables a precise detail reproduction of the soft and hard tissue as well

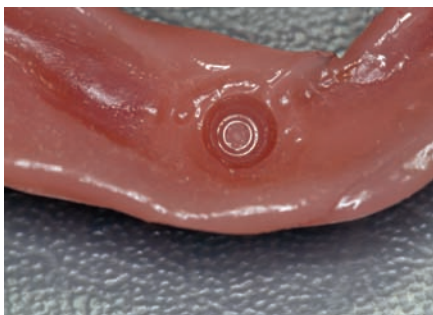


Image 7: Detail image of an implant area. The precise reproduction of the OCTA-protective cap on the ITI-implant proves the excellent detail reproduction of P.U.M.A. soft. Its remarkable that this A-silicone allows so precise impressions without using any pressure

## Relining material with high resilience

A reliable material for direct and indirect permanent soft relinings is the addition-curing vinyl polysiloxane material P.U.M.A. soft (R-dental, Hamburg).

The clinical proven excellent resilience of the A-silicone enables a treatment of complete toothless jaw bones without any support from the jaw bones, as well as the permanent soft linings of dentures, which covering remaining teeth or implant constructions.

A special adhesive for this A-silicone material enables a strong bond to hot or cold polymerized denture material (on methacrylate basis). The material can be used easily according to the manufacturers instructions for use without any problems.



Image 8: The denture base after a wearing period of six weeks. The female patient has conducted a good oral hygiene and denture care. Discolourations of the relining material here and there are caused by frequent habit of drinking black coffee and smoking. The positive characteristics of the material were not influenced clinically (see enlarged image above)

**Address of correspondence:**  
 Dr. Markus Firla  
 Hauptstraße 55  
 49205 Hasbergen-Gaste  
 Germany  
 E-mail: dr.firla@t-online.de



Image 9: System kit of P.U.M.A. soft Gingiva with double-chamber-cartridge gingiva, adhesive, grinding element, seal and accessories

The possibility, to apply P.U.M.A. soft from the double-chamber-cartridge is an remarkable improvement in the workflow in case of a direct and indirect relining. In clinical use the material is as proven as in difficult cases under complex circumstances.

### Manufacturer information:

R-dental Dentalerzeugnisse GmbH  
 Winterhuder Weg 88  
 22085 Hamburg  
 Germany  
 Phone: +49 (0)40-22 75 76 17  
 Fax: +49 (0)40-22 75 76 18  
 E-mail: info@r-dental.com  
 r-dental.com

### Order information:

P.U.M.A. soft © Gingiva-System kit  
 Order-No.: PUM4000

P.U.M.A. soft © ADHESIVE-Refill  
 Order-No.: PUA4020

P.U.M.A. soft © Gingiva-Refill  
 Order-No.: PUK4010

P.U.M.A. soft © Transparent-Refill  
 Order-No.: PUK4015